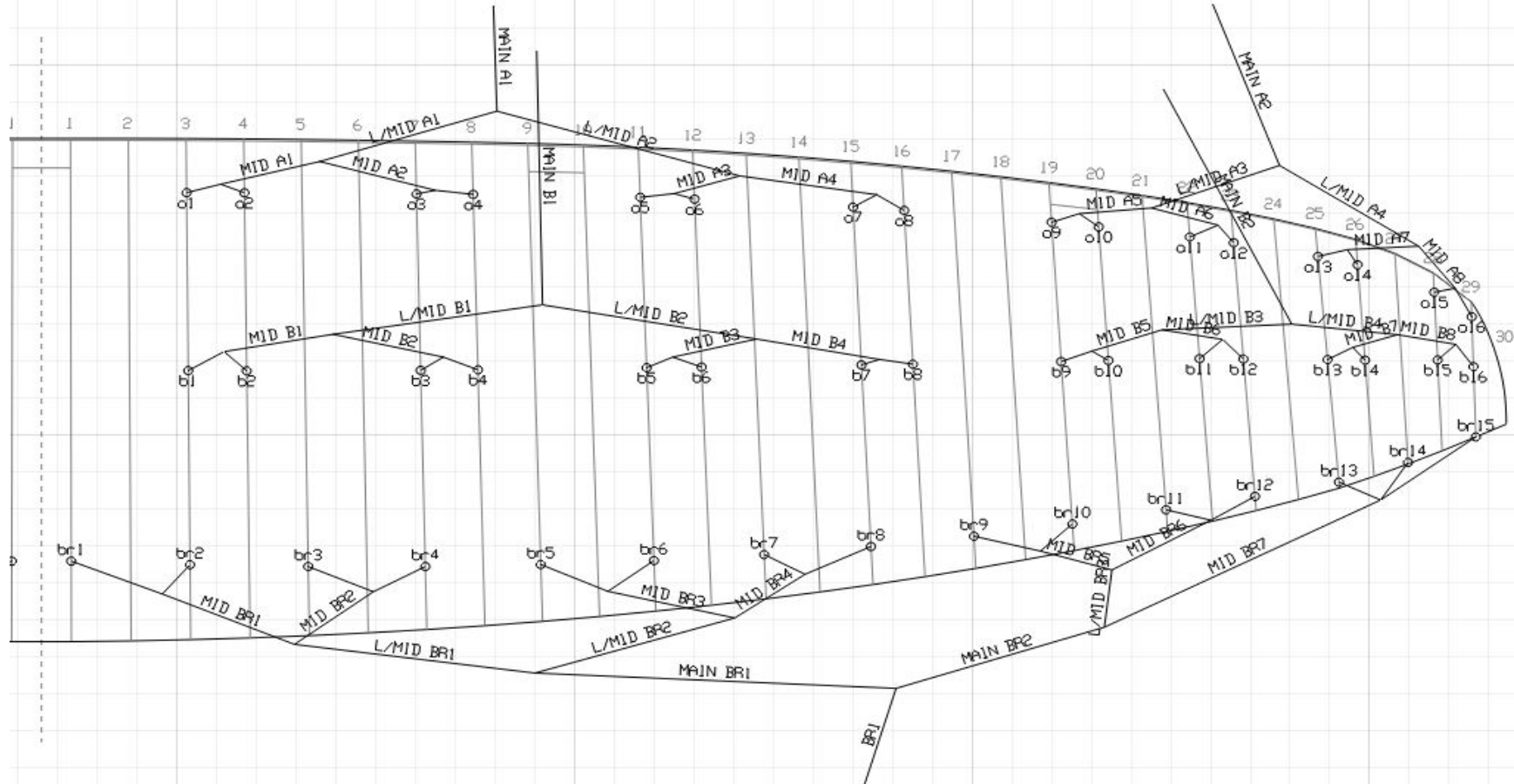


# Boom V2

7.1 Line Plan.8m - 10m

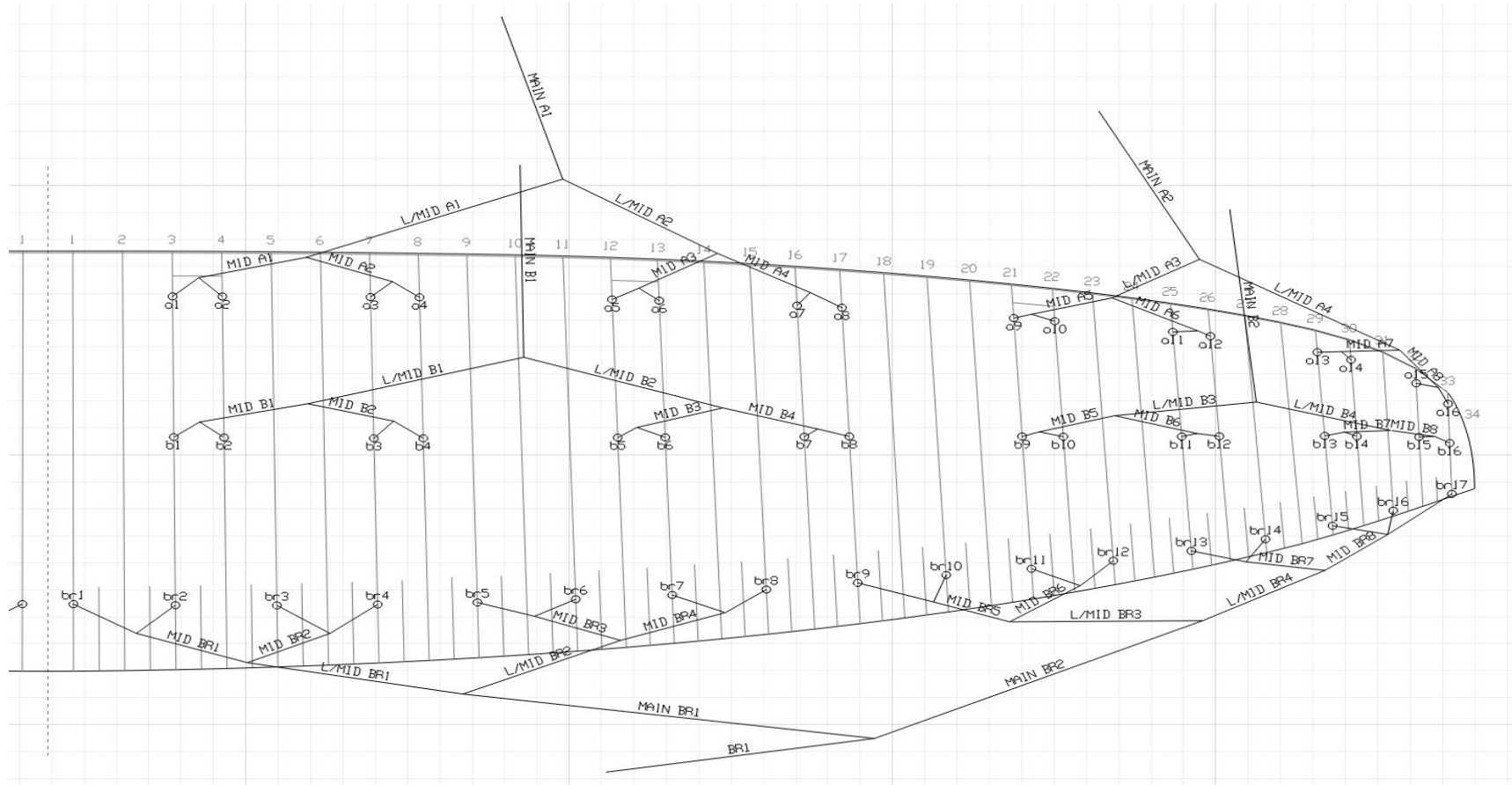
VER :	9
UPDATED :	02.07.21



# Boom V2

7.2 Line Plan.11m - 21m

VER :	9
UPDATED :	02.07.21



# Boom Kite

Lines(8m size)		VER :	Rev2.8			
Filename:	BoomV2__8_100c	UPDATED :	24.08.21			
Upper line						
	A		B		Br	
1	255	DC35 (2Kg)	255	DC35 (2Kg)	525	DC35 (2Kg)
2	180		185		340	
3	255		255		490	
4	225		230		440	
5	245		245		510	
6	190		195		410	
7	220		220		465	
8	220		220		485	
9	205		205		470	
10	140		145		360	
11	195		195		420	
12	170		170		405	
13	200		190		405	
14	165		160		380	
15	210		215		395	
16	220		200			
17						

Middle						
	A		B		BR H/Mid	
1	920	DC60 (5Kg)	945	DC60 (5Kg)	550	DC35 (2Kg)
2	680		710		270	
3	780		810		515	
4	675		705		415	
5	545		580		505	
6	395		430		380	
7	755		740		870	
8	670		625			

L/Middle						
	A		B		BR M/Mid	
1	1220	DC100 (5Kg)	1220	DC100 (5Kg)	1175	DC60 (5Kg)
2	960		960		765	
3	910		910		540	
4	415		475			
					BR L/Mid	
					1175	DC60
					1155	(5Kg)

Main						
	A		B		BR Main	
1	1765	DC160 (10Kg)	1765	DC120 (10Kg)	1225	DC100 (5Kg)
2	1725	DC120 (10Kg)	1725	DC100 (5Kg)		

# Boom Kite

Lines(9m size)		VER :	Rev2.8			
Filename:	BoomV2__9_100c	UPDATED :	24.08.21			
Upper line						
	A		B		Br	
1	270	DC35 (2Kg)	275	DC35 (2Kg)	560	DC35 (2Kg)
2	195		200		365	
3	270		275		525	
4	240		245		470	
5	260		265		545	
6	205		210		440	
7	235		235		500	
8	235		240		520	
9	220		220		500	
10	150		155		390	
11	210		210		445	
12	180		185		435	
13	215		205		430	
14	180		170		405	
15	225		230		425	
16	235		210			
17						

Middle						
	A		B		BR H/Mid	
1	985	DC60 (5Kg)	1015	DC60 (5Kg)	590	DC35 (2Kg)
2	730		765		290	
3	830		865		550	
4	720		755		445	
5	580		615		535	
6	420		455		410	
7	805		790		935	
8	715		665			

L/Middle						
	A		B		BR M/Mid	
1	1300	DC100 (5Kg)	1300	DC100 (5Kg)	1255	DC60 (5Kg)
2	1035		1035		820	
3	975		975		575	
4	450		510			
					BR L/Mid	
					1230	DC60
					1225	(5Kg)

Main						
	A		B		BR Main	
1	1900	DC160 (10Kg)	1900	DC120 (10Kg)	1325	DC100 (5Kg)
2	1865	DC120 (10Kg)	1865	DC100 (5Kg)		

# Boom Kite

Lines(10m size)		VER :	Rev2.8			
Filename:	BoomV2_10_100c	UPDATED :	24.08.21			
Upper line						
	A		B		Br	
1	290	DC35 (2Kg)	290	DC35 (2Kg)	595	DC35 (2Kg)
2	210		215			
3	290		290			
4	260		260			
5	280		280			
6	220		225			
7	250		250			
8	250		255			
9	235		235			
10	160		165			
11	220		225			
12	195		195			
13	230		220			
14	190		180			
15	240		240			
16	245		225			
17						

Middle						
	A		B		BR H/Mid	
1	1045	DC60 (5Kg)	1080	DC60 (5Kg)	625	DC35 (2Kg)
2	780		820			
3	885		920			
4	770		805			
5	620		660			
6	450		490			
7	855		840			
8	760		710			

L/Middle						
	A		B		BR M/Mid	
1	1380	DC100 (5Kg)	1380	DC100	1330	DC60 (5Kg)
2	1105		1105	(5Kg)	870	
3	1035		1035	DC60	610	
4	480		545	(5Kg)		
					BR L/Mid	
					1290	DC60
					1285	(5Kg)

Main						
	A		B		BR Main	
1	2020	DC160 (10Kg)	2020	DC120 (10Kg)	1415	DC100 (5Kg)
2	1995	DC120 (10Kg)	1995	DC100 (5Kg)		

# Boom Kite

<b>Lines(11m size)</b>	VER :	Rev2.8
------------------------	-------	--------

<b>Filename:</b>	BoomV2_11_100c	UPDATED : 24.08.21
------------------	----------------	--------------------

## Upper line

	A		B		Br	
1	270	DC35 (2Kg)	270	DC35 (2Kg)	560	DC35 (2Kg)
2	190		195		360	
3	270		275		520	
4	235		240		460	
5	260		265		540	
6	215		215		445	
7	235		240		505	
8	240		240		525	
9	220		220		510	
10	155		160		375	
11	205		210		480	
12	180		180		445	
13	210		205		440	
14	195		180		380	
15	220		225		300	
16	235		220		285	
17					365	

## Middle

	A		B		BR H/Mid	
1	1005	DC60 (5Kg)	1030	DC60 (5Kg)	575	DC35 (2Kg)
2	745		770		275	
3	865		895		610	
4	765		800		510	
5	875		905		610	
6	670		705		420	
7	815		810		490	
8	755		710		550	

## L/Middle

	A		B		BR M/Mid	
1	1460	DC100 (5Kg)	1460	DC100 (5Kg)	1265	DC60 (5Kg)
2	1125		1125		745	
3	760		760		930	
4	455		495		795	
					BR L/Mid	
					1780	DC60
					1350	(5Kg)

## Main

	A		B		BR Main	
1	2300	DC160 (10Kg)	2300	DC120 (10Kg)	1310	DC100 (5Kg)
2	2285	DC120 (10Kg)	2285	DC100 (5Kg)		

# Boom Kite

Lines(13m size) VER : Rev2.7

Filename: BoomV2\_13\_99b UPDATED : 03.08.21

## Upper line

	A		B		Br	
1	295	DC35 (2Kg)	300	DC35 (2Kg)	615	DC35 (2Kg)
2	210		215		390	
3	300		300		575	
4	260		265		505	
5	290		290		595	
6	235		240		490	
7	260		265		555	
8	260		265		580	
9	245		245		560	
10	170		175		410	
11	230		230		525	
12	195		200		490	
13	235		230		485	
14	210		195		415	
15	245		245		330	
16	260		240		315	
17					400	

## Middle

	A		B		BR H/Mid	
1	1115	DC60 (5Kg)	1140	DC60 (5Kg)	640	DC35 (2Kg)
2	825		855		295	
3	955		995		675	
4	850		885		555	
5	935		970		675	
6	705		745		455	
7	895		890		545	
8	825		780		605	

## L/Middle

	A		B		BR M/Mid	
1	1630	DC100 (5Kg)	1630	DC100	1395	DC60 (5Kg)
2	1260		1260	(5Kg)	810	
3	875		875	DC60	1030	
4	505		545	(5Kg)	865	
					BR L/Mid	
					1965	DC60
					1475	(5Kg)

## 1875

	A		B		BR Main	
1	2550	DC160 (10Kg)	2550	DC120 (10Kg)	1500	DC100 (5Kg)
2	2550	DC120 (10Kg)	2550	DC100 (5Kg)		

# Boom Kite

<b>Lines(15m size)</b>	VER :	Rev2.8
------------------------	-------	--------

<b>Filename:</b>	BoomV2_15_100c	UPDATED : 24.08.21
------------------	----------------	--------------------

## Upper line

	A		B		Br	
1	325	DC35 (2Kg)	330	DC35 (2Kg)	675	DC35 (2Kg)
2	230		235		425	
3	330		330		625	
4	285		290		555	
5	315		320		650	
6	260		265		535	
7	285		290		605	
8	290		290		635	
9	265		270		610	
10	185		190		445	
11	250		250		575	
12	215		215		535	
13	255		250		530	
14	230		215		455	
15	265		270		360	
16	285		260		345	
17					440	

## Middle

	A		B		BR H/Mid	
1	1220	DC60 (5Kg)	1250	DC60 (5Kg)	695	DC35 (2Kg)
2	910		945		325	
3	1050		1085		735	
4	940		975		610	
5	1025		1065		735	
6	775		820		500	
7	980		975		595	
8	905		855		665	

## L/Middle

	A		B		BR M/Mid	
1	1745	DC100 (5Kg)	1745	DC100 (5Kg)	1525	DC60 (5Kg)
2	1355		1355		890	
3	930		930		1120	
4	525		575		945	
					BR L/Mid	
					2145	DC60
					1615	(5Kg)

## Main

	A		B		BR Main	
1	2885	DC160 (10Kg)	2885	DC120 (10Kg)	1720	DC100 (5Kg)
2	2900	DC120 (10Kg)	2900	DC100 (5Kg)		



# Boom Kite

<b>Lines(18m size)</b>	VER :	Rev2.8
------------------------	-------	--------

<b>Filename:</b>	BoomV2_18_100c	UPDATED :	24.08.21
------------------	----------------	-----------	----------

## Upper line

	A		B		Br	
1	355	DC35 (2Kg)	360	DC35 (2Kg)	745	DC35 (2Kg)
2	250		255		475	
3	360		365		690	
4	320		320		610	
5	350		350		720	
6	290		290		590	
7	310		315		665	
8	320		320		695	
9	295		295		675	
10	210		210		495	
11	275		280		630	
12	240		240		595	
13	285		275		585	
14	255		240		505	
15	295		300		420	
16	310		290		395	
17					495	

## Middle

	A		B		BR H/Mid	
1	1250	DC60 (5Kg)	1275	DC60 (5Kg)	765	DC35 (2Kg)
2	900		935		365	
3	1140		1175		805	
4	1035		1070		675	
5	1135		1175		800	
6	870		915		560	
7	1095		1090		680	
8	1010		960		735	

2365

## L/Middle

	A		B		BR M/Mid	
1	1940	DC100 (5Kg)	1940	DC100 (5Kg)	1675	DC60 (5Kg)
2	1430		1430		990	
3	1025		1025		1245	
4	590		635		1050	
					BR L/Mid	
					2360	DC60
					1800	(5Kg)

## Main

	A		B		BR Main	
1	3130	DC160 (10Kg)	3130	DC120 (10Kg)	1735	DC100 (5Kg)
2	3075	DC120 (10Kg)	3075	DC100 (5Kg)		

# Boom Kite

Lines(21m size)	VER :	Rev2.8
-----------------	-------	--------

Filename:	BoomV2_21_100c	UPDATED :	24.08.21
-----------	----------------	-----------	----------

## Upper line

	A		B		Br	
1	395	DC35 (2Kg)	395	DC35 (2Kg)	815	DC35 (2Kg)
2	280		285		520	
3	400		400		765	
4	350		355		675	
5	385		390		795	
6	320		325		655	
7	345		350		735	
8	355		355		775	
9	325		330		695	
10	235		240		500	
11	305		305		640	
12	265		270		600	
13	310		305		640	
14	285		265		560	
15	325		330		455	
16	340		320		435	
17					550	

## Middle

	A		B		BR H/Mid	
1	1410	DC60 (5Kg)	1440	DC60 (5Kg)	845	DC35 (2Kg)
2	1030		1065		395	
3	1305		1345		895	
4	1190		1230		750	
5	1290		1335		940	
6	1020		1065		675	
7	1200		1195		740	
8	1110		1060		805	

## L/Middle

	A		B		BR M/Mid	
1	2135	DC100 (5Kg)	2135	DC100	1855	DC60 (5Kg)
2	1565		1565	(5Kg)	1085	
3	1140		1140	DC60	1365	
4	740		785	(5Kg)	1160	
					BR L/Mid	
					2590	DC60
					1975	(5Kg)

## 1790

	A	B	BR Main

1	3250	DC160 (10Kg)	3250	DC120 (10Kg)	1790	DC100 (5Kg)
2	3190	DC120 (10Kg)	3190	DC100 (5Kg)		