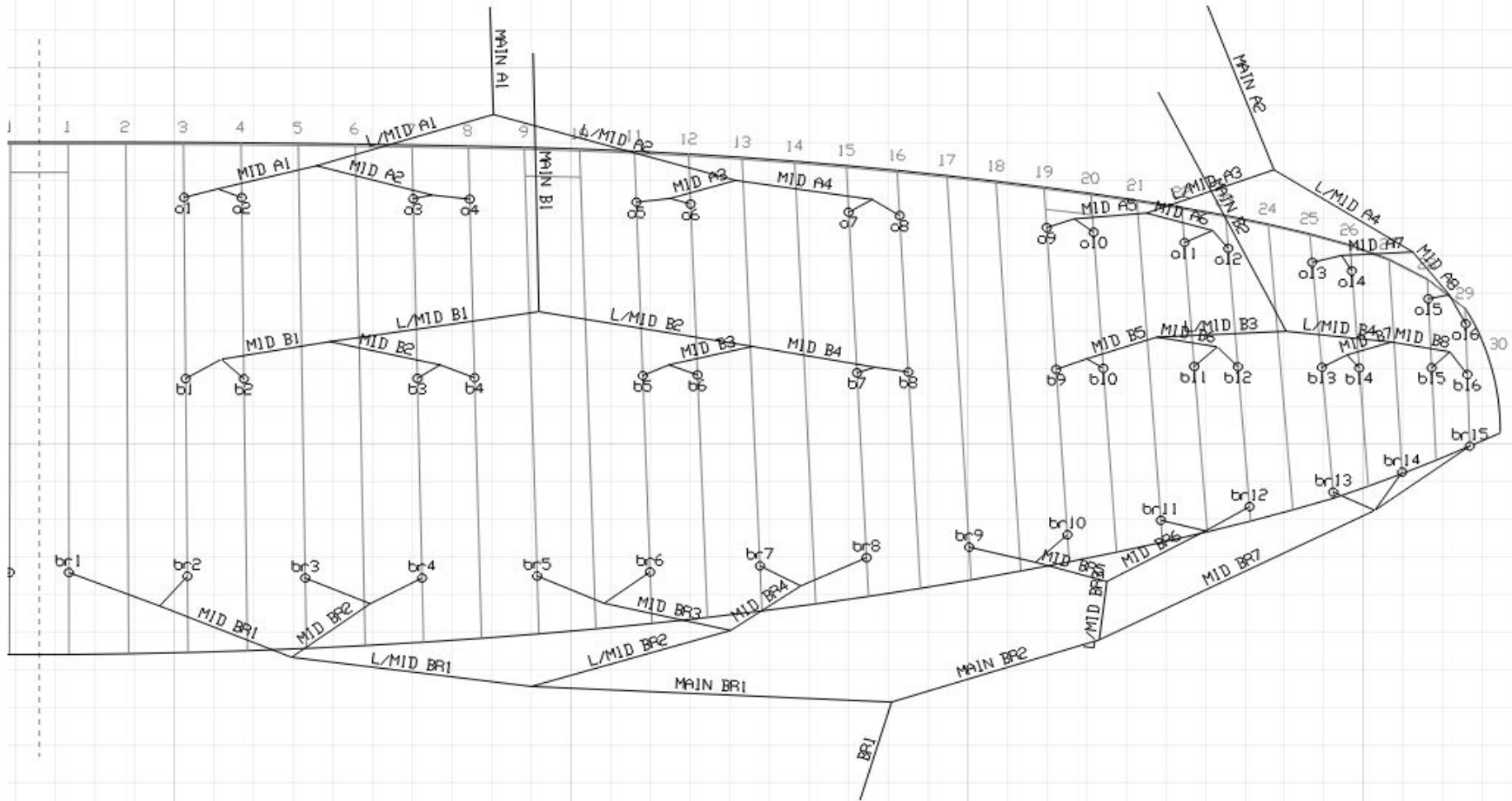


# Boom V2

7.1 Line Plan.8m - 10m

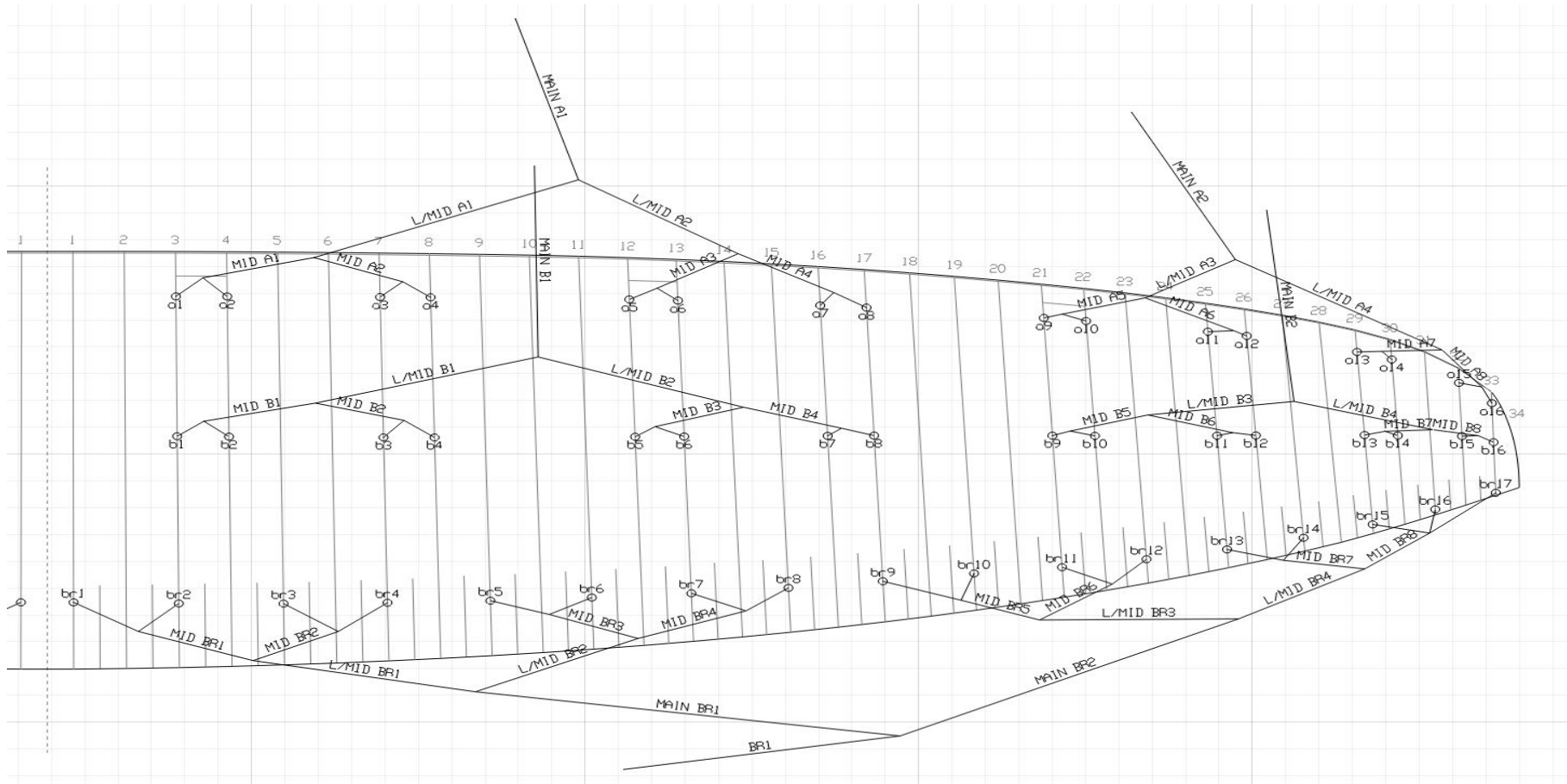
VER :	2
UPDATED :	17/01/2023



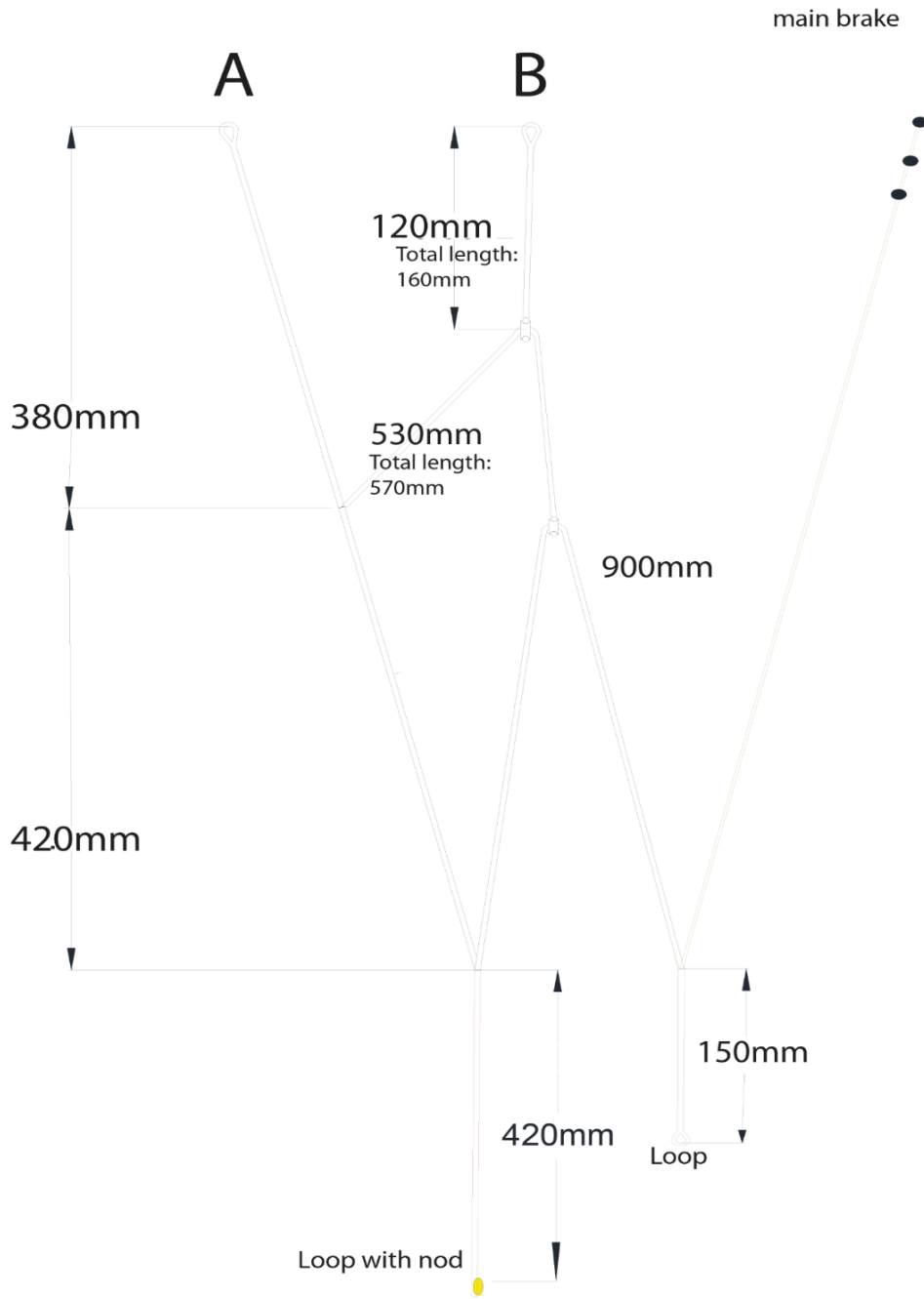
# Boom V2

7.2 Line Plan.11m - 21m

VER :	2
UPDATED :	17/01/2023



# Boom V2 Riser



# Boom Kite

<b>Lines(8m size)</b>	VER :	rev 2
-----------------------	-------	-------

<b>Filename:</b>	BoomV2_8_IKA_212	UPDATED :	17/01/2023
------------------	------------------	-----------	------------

## Upper line

	A		B		Br	
1	255	<b>8001/50 (5Kg)</b>	255	<b>8001/50 (5Kg)</b>	525	<b>8001/25 (2Kg)</b>
2	180		185		335	
3	255		255		495	
4	225		225		440	
5	245		245		510	
6	190		195		410	
7	220		225		465	
8	220		220		485	
9	205		205		470	
10	145	<b>8001/25 (2Kg)</b>	145	<b>8001/25 (2Kg)</b>	360	
11	195		200		420	
12	170		170		405	
13	200		195		415	
14	170		160		390	
15	210		215		410	
16	220		200			

## Middle

	A		B		BR H/Mid	
1	920	<b>8001/70 (5Kg)</b>	945	<b>8001/70 (5Kg)</b>	555	<b>8001/25 (2Kg)</b>
2	675		705		265	
3	780		810		510	
4	670		700		410	
5	605		640		505	
6	455		490		375	
7	815	<b>8001/50 (2Kg)</b>	800	<b>8001/50 (2Kg)</b>	870	
8	735		690			

## L/Middle

	A		B		BR M/Mid	
1	1220	<b>8001/130 (10Kg)</b>	1220	<b>8001/130 (10Kg)</b>	1175	<b>8001/25 (2Kg)</b>
2	955		955		760	
3	960	<b>8001/90 (5Kg)</b>	960	<b>8001/90 (5Kg)</b>	550	
4	475	<b>8001/70 (5Kg)</b>	530	<b>8001/70 (5Kg)</b>		
					<b>BR L/Mid</b>	

					1180	8001/50
					1140	(5Kg)
<b>Main</b>						
	<b>A</b>		<b>B</b>		<b>BR Main</b>	
1	1765	8001/190 (10Kg)	1765	8001/190 (10Kg)	1320	8001/70 (5Kg)
2	1595	8001/130 (10Kg)	1595	8001/130 (10Kg)		

# Boom Kite

<b>Lines(9m size)</b>	VER :	rev 2
-----------------------	-------	-------

<b>Filename:</b>	BoomV2_9_IKA_212	UPDATED :	17/01/2023
------------------	------------------	-----------	------------

## Upper line

	A		B		Br	
1	270	<b>8001/50 (5Kg)</b>	275	<b>8001/50 (5Kg)</b>	560	<b>8001/25 (2Kg)</b>
2	195		200		355	
3	270		275		525	
4	240		245		465	
5	260		265		540	
6	205		210		435	
7	235		235		500	
8	235		235		520	
9	220		220		500	
10	155	<b>8001/25 (2Kg)</b>	155	<b>8001/25 (2Kg)</b>	385	
11	210		210		445	
12	180		185		435	
13	215		205		445	
14	185		175		420	
15	225		230		445	
16	235		215			

## Middle

	A		B		BR H/Mid	
1	985	<b>8001/70 (5Kg)</b>	1015	<b>8001/70 (5Kg)</b>	595	<b>8001/25 (2Kg)</b>
2	730		760		280	
3	830		865		550	
4	715		750		440	
5	620		650		535	
6	460		490		405	
7	875	<b>8001/50 (2Kg)</b>	795	<b>8001/50 (2Kg)</b>	930	
8	790		685			

## L/Middle

	A		B		BR M/Mid	
1	1300	<b>8001/130 (10Kg)</b>	1300	<b>8001/130 (10Kg)</b>	1255	<b>8001/25 (2Kg)</b>
2	1025		1025		810	
3	950	<b>8001/90 (5Kg)</b>	950	<b>8001/90 (5Kg)</b>	590	
4	395	<b>8001/70 (5Kg)</b>	515	<b>8001/70 (5Kg)</b>		
					<b>BR L/Mid</b>	

					1235	8001/50
					1195	(5Kg)
1790						
	A		B		BR Main	
1	1900	8001/190 (10Kg)	1900	8001/190 (10Kg)	1420	8001/70 (5Kg)
2	1840	8001/130 (10Kg)	1840	8001/130 (10Kg)		

# Boom Kite

Lines(10m size)	VER :	rev 2
-----------------	-------	-------

Filename:	BoomV2_10_IKA_212	UPDATED :	17/01/2023
-----------	-------------------	-----------	------------

## Upper line

	A		B		Br	
1	290	8001/50 (5Kg)	290	8001/50 (5Kg)	595	8001/25 (2Kg)
2	210		215			
3	290		290			
4	255		260			
5	275		280			
6	220		220			
7	250		250			
8	255		255			
9	235		240			
10	175	8001/25 (2Kg)	175	8001/25 (2Kg)	425	
11	220		225			
12	200		200			
13	230		220			
14	205		195			
15	240		240			
16	250		235			

## Middle

	A		B		BR H/Mid	
1	1045	8001/70 (5Kg)	1080	8001/70 (5Kg)	630	8001/25 (2Kg)
2	775		815			
3	885		925			
4	770		805			
5	695		735			
6	550		590			
7	935	8001/50 (2Kg)	920	8001/50 (2Kg)	1040	
8	870		825			

## L/Middle

	A		B		BR M/Mid	
1	1385	8001/130 (10Kg)	1385	8001/130 (10Kg)	1330	8001/25 (2Kg)
2	1095		1095			
3	1105	8001/90 (5Kg)	1105	8001/90 (5Kg)	600	
4	595	8001/70 (5Kg)	655	8001/70 (5Kg)		
					BR L/Mid	



					1285	8001/50
					1295	(5Kg)
1790						
	A		B		BR Main	
1	2020	8001/190 (10Kg)	2020	8001/190 (10Kg)	1520	8001/70 (5Kg)
2	1840	8001/130 (10Kg)	1840	8001/130 (10Kg)		

# Boom Kite

Lines(11m size)	VER :	rev 2
-----------------	-------	-------

Filename:	BoomV2_11_IKA_212	UPDATED :	17/01/2023
-----------	-------------------	-----------	------------

## Upper line

	A		B		Br	
1	270	8001/50 (5Kg)	270	8001/50 (5Kg)	560	8001/25 (2Kg)
2	190		195		350	
3	275		275		525	
4	235		240		460	
5	260		265		545	
6	215		215		445	
7	240		240		505	
8	240		240		525	
9	225		225		510	
10	160	8001/25 (2Kg)	160	8001/25 (2Kg)	370	
11	205		210		480	
12	185		185		450	
13	215		210		445	
14	190		180		385	
15	220		225		315	
16	235		220		300	
17					380	

## Middle

	A		B		BR H/Mid	
1	1010	8001/70 (5Kg)	1040	8001/70 (5Kg)	585	8001/25 (2Kg)
2	745		775		265	
3	870		905		610	
4	770		805		505	
5	880		920		615	
6	690		730		415	
7	880	8001/50 (2Kg)	875	8001/50 (2Kg)	510	
8	815	780	560			

## L/Middle

	A		B		BR M/Mid	
1	1465	8001/130 (10Kg)	1465	8001/130 (10Kg)	1275	8001/25 (2Kg)
2	1125		1125		735	
3	1040	8001/90 (5Kg)	1040	8001/90 (5Kg)	945	
4	685	8001/70 (5Kg)	730	8001/70 (5Kg)	785	
					BR L/Mid	

					1795	8001/50
					1335	(5Kg)
1790						
	A		B		BR Main	
1	2310	8001/190 (10Kg)	2310	8001/190 (10Kg)	1420	8001/70 (5Kg)
2	2000	8001/130 (10Kg)	2000	8001/130 (10Kg)		

# Boom Kite

Lines(13m size)	VER :	rev 2
-----------------	-------	-------

Filename:	BoomV2_13_IKA_212	UPDATED :	17/01/2023
-----------	-------------------	-----------	------------

## Upper line

	A		B		Br	
1	295	8001/50 (5Kg)	300	8001/50 (5Kg)	615	8001/25 (2Kg)
2	210		215		385	
3	300		300		580	
4	260		265		505	
5	290		290		595	
6	235		240		485	
7	260		265		555	
8	260		265		580	
9	245		245		555	
10	175	8001/25 (2Kg)	175	8001/25 (2Kg)	400	
11	225		230		530	
12	200		200		490	
13	235		230		485	
14	210		195		415	
15	245		250		350	
16	255		235		330	
17					415	

## Middle

	A		B		BR H/Mid	
1	1115	8001/70 (5Kg)	1145	8001/70 (5Kg)	645	8001/25 (2Kg)
2	825		860		290	
3	950		990		670	
4	840		880		555	
5	940		980		675	
6	725		765		445	
7	965	8001/50 (2Kg)	960	8001/50 (2Kg)	565	
8	890		850		605	

## L/Middle

	A		B		BR M/Mid	
1	1620	8001/130 (10Kg)	1620	8001/130 (10Kg)	1400	8001/25 (2Kg)
2	1260		1260		805	
3	1200	8001/90 (5Kg)	1200	8001/90 (5Kg)	1040	
4	780	8001/70 (5Kg)	825	8001/70 (5Kg)	840	
					BR L/Mid	

					2085	8001/50
					1570	(5Kg)
1790						
	A		B		BR Main	
1	2550	8001/190 (10Kg)	2550	8001/190 (10Kg)	1475	8001/70 (5Kg)
2	2200	8001/130 (10Kg)	2200	8001/130 (10Kg)		

# Boom Kite

<b>Lines(15m size)</b>	VER :	rev 2
------------------------	-------	-------

<b>Filename:</b>	BoomV2_15_IKA_212	UPDATED :	17/01/2023
------------------	-------------------	-----------	------------

## Upper line

	A		B		Br	
1	325	<b>8001/50 (5Kg)</b>	325	<b>8001/50 (5Kg)</b>	670	<b>8001/25 (2Kg)</b>
2	230		235			
3	325		330			
4	285		285			
5	315		315			
6	260		260			
7	285		285			
8	285		290			
9	265		270			
10	195	<b>8001/25 (2Kg)</b>	195	<b>8001/25 (2Kg)</b>	440	
11	250		250		575	
12	220		225		535	
13	255		250		530	
14	230		215		455	
15	265		270		380	
16	280		260		360	
17					455	

## Middle

	A		B		BR H/Mid	
1	1215	<b>8001/70 (5Kg)</b>	1245	<b>8001/70 (5Kg)</b>	700	<b>8001/25 (2Kg)</b>
2	905		940			
3	1040		1075			
4	930		970			
5	1030		1075			
6	810		855			
7	1060	<b>8001/50 (2Kg)</b>	975	<b>8001/50 (2Kg)</b>	610	
8	980		860		665	

## L/Middle

	A		B		BR M/Mid	
1	1735	<b>8001/130 (10Kg)</b>	1735	<b>8001/130 (10Kg)</b>	1515	<b>8001/25 (2Kg)</b>
2	1355		1355		885	
3	1315	<b>8001/90 (5Kg)</b>	1315	<b>8001/90 (5Kg)</b>	1130	
4	880	<b>8001/70 (5Kg)</b>	1010	<b>8001/70 (5Kg)</b>	930	
					<b>BR L/Mid</b>	

					2270	8001/50
					1730	(5Kg)
1790						
	A		B		BR Main	
1	2770	8001/190 (10Kg)	2770	8001/190 (10Kg)	1575	8001/70 (5Kg)
2	2380	8001/130 (10Kg)	2380	8001/130 (10Kg)		

# Boom Kite

Lines(18m size)	VER :	rev 2
-----------------	-------	-------

Filename:	BoomV2_18_IKA_212	UPDATED :	17/01/2023
-----------	-------------------	-----------	------------

## Upper line

	A		B		Br	
1	355	8001/50 (5Kg)	360	8001/50 (5Kg)	740	8001/25 (2Kg)
2	250		255		470	
3	360		365		690	
4	320		320		610	
5	350		350		715	
6	290		295		590	
7	310		315		665	
8	320		325		700	
9	295		300		675	
10	215	8001/25 (2Kg)	220	8001/25 (2Kg)	490	
11	275		280		635	
12	250		250		595	
13	285		275		585	
14	255		245		510	
15	295		300		420	
16	305		290		400	
17					510	

## Middle

	A		B		BR H/Mid	
1	1245	8001/70 (5Kg)	1280	8001/70 (5Kg)	770	8001/25 (2Kg)
2	900		940		355	
3	1135		1180		800	
4	1030		1075		675	
5	1140		1185		810	
6	905		950		545	
7	1180	8001/50 (2Kg)	1175	8001/50 (2Kg)	680	
8	1090	1050	745			

## L/Middle

	A		B		BR M/Mid	
1	1940	8001/130 (10Kg)	1940	8001/130 (10Kg)	1675	8001/25 (2Kg)
2	1440		1440		985	
3	1490	8001/90 (5Kg)	1490	8001/90 (5Kg)	1255	
4	1010	8001/70 (5Kg)	1060	8001/70 (5Kg)	1035	
					BR L/Mid	



					2515	8001/50
					1920	(5Kg)
1790						
	A		B		BR Main	
1	3125	8001/190 (10Kg)	3125	8001/190 (10Kg)	1650	8001/70 (5Kg)
2	2600	8001/130 (10Kg)	2600	8001/130 (10Kg)		

# Boom Kite

<b>Lines(21m size)</b>	VER :	rev 2
------------------------	-------	-------

Filename:	BoomV2_21_IKA_212	UPDATED :	27/01/2023
-----------	-------------------	-----------	------------

## Upper line

	A		B		Br	
1	390	8001/50 (5Kg)	395	8001/50 (5Kg)	815	8001/25 (2Kg)
2	280		285		515	
3	395		395		755	
4	350		355		670	
5	380		380		785	
6	320		320		645	
7	340		345		720	
8	350		350		760	
9	325		325		680	
10	240	8001/25 (2Kg)	245	8001/25 (2Kg)	480	
11	300		300		635	
12	270		270		590	
13	305		300		635	
14	280		265		555	
15	320		325		450	
16	335		315		435	
17					555	

## Middle

	A		B		BR H/Mid	
1	1390	8001/70 (5Kg)	1425	8001/70 (5Kg)	840	8001/25 (2Kg)
2	1025		1065		390	
3	1275		1320		870	
4	1170		1215		740	
5	1275		1325		935	
6	1025		1075		650	
7	1280	8001/50 (2Kg)	1275	8001/50 (2Kg)	735	
8	1185		1145		810	

## L/Middle

	A		B		BR M/Mid	
1	2100	8001/130 (10Kg)	2100	8001/130 (10Kg)	1825	8001/25 (2Kg)
2	1565		1565		1080	
3	1560	8001/90 (5Kg)	1560	8001/90 (5Kg)	1360	
4	1095	8001/70 (5Kg)	1145	8001/70 (5Kg)	1125	
					BR L/Mid	

					2730	8001/50
					2115	(5Kg)
1790						
	A		B		BR Main	
1	3315	8001/190 (10Kg)	3315	8001/190 (10Kg)	1730	8001/70 (5Kg)
2	2830	8001/130 (10Kg)	2830	8001/130 (10Kg)		

**Boom V2 8m**

<b>Cell</b>	<b>Length</b>	<b>Cell</b>	<b>Length</b>	<b>Difference</b>
<b>a1</b>	4155	<b>b1</b>	4190	35
<b>a2</b>	4080	<b>b2</b>	4115	35
<b>a3</b>	3910	<b>b3</b>	3950	35
<b>a4</b>	3880	<b>b4</b>	3920	35
<b>a5</b>	3740	<b>b5</b>	3775	35
<b>a6</b>	3685	<b>b6</b>	3725	40
<b>a7</b>	3605	<b>b7</b>	3640	40
<b>a8</b>	3605	<b>b8</b>	3640	35
<b>a9</b>	3365	<b>b9</b>	3400	35
<b>a10</b>	3305	<b>b10</b>	3340	35
<b>a11</b>	3205	<b>b11</b>	3245	35
<b>a12</b>	3180	<b>b12</b>	3215	35
<b>a13</b>	3085	<b>b13</b>	3120	35
<b>a14</b>	3050	<b>b14</b>	3085	35
<b>a15</b>	3015	<b>b15</b>	3030	15
<b>a16</b>	3020	<b>b16</b>	3015	-5

**Boom V2 9m**

<b>Cell</b>	<b>Length</b>	<b>Cell</b>	<b>Length</b>	<b>Difference</b>
<b>a1</b>	4455	<b>b1</b>	4490	35
<b>a2</b>	4380	<b>b2</b>	4415	35
<b>a3</b>	4200	<b>b3</b>	4235	35
<b>a4</b>	4170	<b>b4</b>	4205	35
<b>a5</b>	4015	<b>b5</b>	4055	35
<b>a6</b>	3960	<b>b6</b>	4000	35
<b>a7</b>	3875	<b>b7</b>	3915	35
<b>a8</b>	3875	<b>b8</b>	3915	35
<b>a9</b>	3625	<b>b9</b>	3660	35
<b>a10</b>	3560	<b>b10</b>	3595	35
<b>a11</b>	3455	<b>b11</b>	3490	35
<b>a12</b>	3430	<b>b12</b>	3460	35
<b>a13</b>	3325	<b>b13</b>	3360	35
<b>a14</b>	3290	<b>b14</b>	3325	35
<b>a15</b>	3255	<b>b15</b>	3270	15
<b>a16</b>	3260	<b>b16</b>	3260	-5

**Boom V2 10m**

<b>Cell</b>	<b>Length</b>	<b>Cell</b>	<b>Length</b>	<b>Difference</b>
<b>a1</b>	4735	<b>b1</b>	4775	40
<b>a2</b>	4655	<b>b2</b>	4695	40
<b>a3</b>	4470	<b>b3</b>	4510	40
<b>a4</b>	4435	<b>b4</b>	4475	40
<b>a5</b>	4275	<b>b5</b>	4320	40
<b>a6</b>	4220	<b>b6</b>	4260	45
<b>a7</b>	4130	<b>b7</b>	4175	40
<b>a8</b>	4135	<b>b8</b>	4175	40
<b>a9</b>	3875	<b>b9</b>	3915	40
<b>a10</b>	3815	<b>b10</b>	3855	40
<b>a11</b>	3720	<b>b11</b>	3760	40
<b>a12</b>	3695	<b>b12</b>	3735	40
<b>a13</b>	3600	<b>b13</b>	3640	40
<b>a14</b>	3575	<b>b14</b>	3610	35
<b>a15</b>	3545	<b>b15</b>	3565	20
<b>a16</b>	3560	<b>b16</b>	3555	-5

**Boom V2 11m**

<b>Cell</b>	<b>Length</b>	<b>Cell</b>	<b>Length</b>	<b>Difference</b>
<b>a1</b>	5055	<b>b1</b>	5085	30
<b>a2</b>	4975	<b>b2</b>	5010	30
<b>a3</b>	4795	<b>b3</b>	4825	35
<b>a4</b>	4760	<b>b4</b>	4790	35
<b>a5</b>	4570	<b>b5</b>	4605	35
<b>a6</b>	4520	<b>b6</b>	4555	35
<b>a7</b>	4445	<b>b7</b>	4480	35
<b>a8</b>	4445	<b>b8</b>	4480	35
<b>a9</b>	4145	<b>b9</b>	4185	40
<b>a10</b>	4080	<b>b10</b>	4120	40
<b>a11</b>	3935	<b>b11</b>	3975	40
<b>a12</b>	3910	<b>b12</b>	3950	40
<b>a13</b>	3780	<b>b13</b>	3815	35
<b>a14</b>	3760	<b>b14</b>	3785	30
<b>a15</b>	3725	<b>b15</b>	3730	10
<b>a16</b>	3735	<b>b16</b>	3725	-10

**Boom V2 13m**

<b>Cell</b>	<b>Length</b>	<b>Cell</b>	<b>Length</b>	<b>Difference</b>
<b>a1</b>	5585	<b>b1</b>	5615	35
<b>a2</b>	5495	<b>b2</b>	5530	35
<b>a3</b>	5295	<b>b3</b>	5335	35
<b>a4</b>	5255	<b>b4</b>	5295	35
<b>a5</b>	5050	<b>b5</b>	5090	40
<b>a6</b>	4995	<b>b6</b>	5035	40
<b>a7</b>	4910	<b>b7</b>	4955	40
<b>a8</b>	4915	<b>b8</b>	4955	40
<b>a9</b>	4585	<b>b9</b>	4625	40
<b>a10</b>	4515	<b>b10</b>	4555	45
<b>a11</b>	4355	<b>b11</b>	4395	45
<b>a12</b>	4330	<b>b12</b>	4370	40
<b>a13</b>	4180	<b>b13</b>	4215	35
<b>a14</b>	4155	<b>b14</b>	4185	30
<b>a15</b>	4110	<b>b15</b>	4125	10
<b>a16</b>	4125	<b>b16</b>	4115	-10



**Boom V2 15m**

<b>Cell</b>	<b>Length</b>	<b>Cell</b>	<b>Length</b>	<b>Difference</b>
<b>a1</b>	6040	<b>b1</b>	6075	35
<b>a2</b>	5945	<b>b2</b>	5985	35
<b>a3</b>	5735	<b>b3</b>	5770	40
<b>a4</b>	5690	<b>b4</b>	5730	40
<b>a5</b>	5475	<b>b5</b>	5515	40
<b>a6</b>	5420	<b>b6</b>	5460	45
<b>a7</b>	5335	<b>b7</b>	5380	45
<b>a8</b>	5340	<b>b8</b>	5385	45
<b>a9</b>	4995	<b>b9</b>	5040	45
<b>a10</b>	4920	<b>b10</b>	4965	45
<b>a11</b>	4755	<b>b11</b>	4800	45
<b>a12</b>	4730	<b>b12</b>	4775	45
<b>a13</b>	4575	<b>b13</b>	4615	40
<b>a14</b>	4550	<b>b14</b>	4580	30
<b>a15</b>	4505	<b>b15</b>	4520	15
<b>a16</b>	4520	<b>b16</b>	4510	-5

**Boom V2 18m**

<b>Cell</b>	<b>Length</b>	<b>Cell</b>	<b>Length</b>	<b>Difference</b>
<b>a1</b>	6670	<b>b1</b>	6705	40
<b>a2</b>	6565	<b>b2</b>	6600	40
<b>a3</b>	6325	<b>b3</b>	6370	45
<b>a4</b>	6285	<b>b4</b>	6330	45
<b>a5</b>	6045	<b>b5</b>	6090	45
<b>a6</b>	5990	<b>b6</b>	6035	45
<b>a7</b>	5905	<b>b7</b>	5955	50
<b>a8</b>	5915	<b>b8</b>	5960	45
<b>a9</b>	5525	<b>b9</b>	5575	50
<b>a10</b>	5445	<b>b10</b>	5495	50
<b>a11</b>	5270	<b>b11</b>	5320	50
<b>a12</b>	5245	<b>b12</b>	5290	50
<b>a13</b>	5075	<b>b13</b>	5115	40
<b>a14</b>	5045	<b>b14</b>	5080	35
<b>a15</b>	5000	<b>b15</b>	5010	10
<b>a16</b>	5005	<b>b16</b>	5000	-10

**Boom V2 21m**

<b>Cell</b>	<b>Length</b>	<b>Cell</b>	<b>Length</b>	<b>Difference</b>
<b>a1</b>	7195	<b>b1</b>	7235	40
<b>a2</b>	7085	<b>b2</b>	7125	45
<b>a3</b>	6830	<b>b3</b>	6880	45
<b>a4</b>	6785	<b>b4</b>	6835	45
<b>a5</b>	6535	<b>b5</b>	6585	50
<b>a6</b>	6470	<b>b6</b>	6525	50
<b>a7</b>	6385	<b>b7</b>	6440	55
<b>a8</b>	6395	<b>b8</b>	6445	50
<b>a9</b>	5985	<b>b9</b>	6040	55
<b>a10</b>	5900	<b>b10</b>	5955	55
<b>a11</b>	5710	<b>b11</b>	5765	55
<b>a12</b>	5685	<b>b12</b>	5735	50
<b>a13</b>	5510	<b>b13</b>	5550	40
<b>a14</b>	5480	<b>b14</b>	5515	35
<b>a15</b>	5430	<b>b15</b>	5445	15
<b>a16</b>	5445	<b>b16</b>	5435	-10